



# The Viewpoint

June 2010

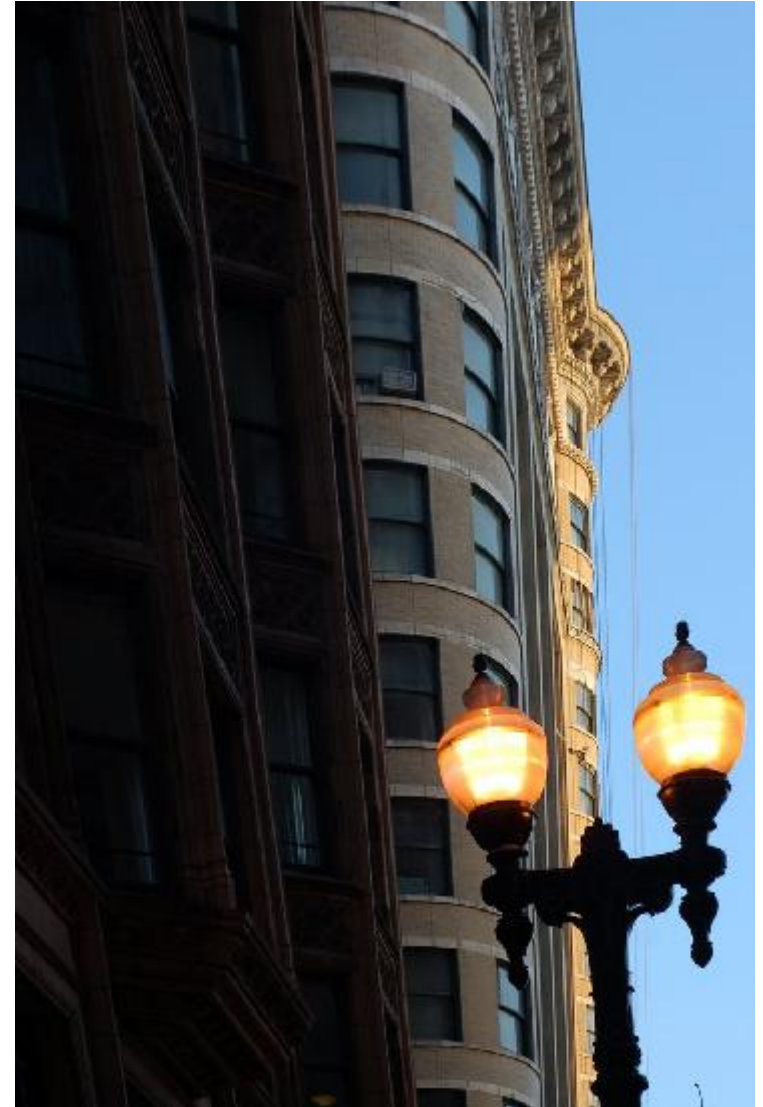


Photo Arts Club of Toledo  
Toledo Botanical Garden  
5403 Elmer Drive  
Toledo, Ohio 43613



Cover Photo By: Lori Ann Ford  
<http://PhotoArtsClubofToledo.com>

## Coming Attractions

**June 3, 2010** - Thursday - Scavenger Hunt - Clubhouse and The Gardens - 6:30 pm

**June 6 - 12** - Traverse City/Northern Michigan Photo Trip

**June 10, 2010** - Thursday - Board Meeting - **\*\*Cancelled\*\***

**June 17, 2010** - Thursday - Monthly Contest - Clubhouse - 7 pm - Digital Black and White.

**July 1, 2010** - Thursday - **\*\*\*No Meeting\*\*\***

**July 8, 2010** - Thursday - Board Meeting - All are welcome to join - Clubhouse - 7 pm

**July 15, 2010** - Thursday - Cover Contest and Monthly Contest (Prints - Open) - Clubhouse - 7 pm

### PAC Updates

**Membership:** PACT welcomes the following new members - Marti Huepenbecker, Karen Pool, and Ted Bowman.

PACT thanks the following members for renewing their membership - Ruth Rittichier, Ben Anderson, and Wennie Anderson.

**Elements Group:** First Monday's of the month - Clubhouse - 7 pm - Questions: e-mail Steve Stalker: sstalker@bex.net

**Critique Group:** First Tuesday's of the month (will restart after the IYP program) - Questions: email Joe Pizzuto: joepizzuto@yahoo.com

**Studio Group:** Second Saturday's of the month - Clubhouse - 10 am - Questions: e-mail John Dillon: jdillon356@aol.com.

### Monthly Contest Schedule

June 17	Digital - Black and White
July 15	Print - Open and Cover Contest
Aug 19	Digital - "Framed" and Open
Sept 16	Digital - Open
Oct. 21	Print - Open
Nov 18	Digital - "Emotions" + Open
December	No contest. Holiday Potluck and member slideshow.

### DSLR v/s Point-and-Shoot Camera

 by Jim Hagan

The strengths of single lens reflex (SLR) cameras are:

- Large sensor size - allows the use of a faster ISO, faster shutter speeds and less grain.
- Adaptability – allows the use of interchangeable high quality lenses and accessories.
- Manual controls – SLR offer a wide variety of manual controls - speed, aperture settings, etc.
- Lens quality – in general the SLR lenses are superior
- Image – the viewfinder gives an accurate rendition of the photo image including the ability to preview the photo's depth of field
- Faster shutter action – 8 fps are great for action photos

The weaknesses of SLR cameras are:

- Price - the cost of the camera body and lenses is a substantial investment.
- Size and weight – the weight and bulk of a SLR system can be oppressive.
- Complexity – often difficult to understand the operations.
- Difficult to use at very low heights.

The strengths of a point and shoot camera are:

- Size and weight – slim, light and easy to carry
- Quiet
- Auto mode – most point and shoot cameras have very good auto modes.
- Price – in general they are a lot more affordable

- LCD framing – many have “flip out” screens that helps in taking shots from very low heights and at difficult angles.
- No problem with dust getting on sensors.

The weaknesses of point and shoot cameras are:

- Image quality – the smaller image sensors general give lower quality images especially for very large enlargements.
- Smaller ISO range – more limited that with SLR cameras
- Speed – generally slower than the SLR but improving
- LCD – the actual image captured in the photo is not the image seen in the LCD. While this is usually not a problem, it can be if you would like to see the depth of field in the image. While the LCD is often useful in many situations, it sometimes is difficult to see the image.
- Manual controls – often manual operations are limited and difficult to use
- Less adaptable – no interchangeable lenses.

The decision is yours as to which type of camera to purchase. If you want a portable camera that you will use mainly in the auto mode then a point and shoot camera will probably be a good choice for you. Point and shoot cameras can take very high quality photos and their quality is constantly increasing.

### Joseph Pizzuto's pictures in B&W magazine

Black and White Magazine has selected Joe's portfolio.... "extrapolations".... as a Merit Award winner and six images are featured in the current Issue #76 in book stores near you.

In Joe's own words - "extrapolations" is a portfolio of photographs - consecutive frames created and printed as one image.

## Officers and Board Members for 2009-2010

### President

Steve Stalker 419-472-4720 [sstalker@bex.net](mailto:ssalker@bex.net)

### Vice President

Tajinder Singh 419-467-9636 [tajinder321@yahoo.com](mailto:tajinder321@yahoo.com)

### Treasurer

Donna Gottschalk 419-885-8573 [ddcampbell53@aol.com](mailto:ddcampbell53@aol.com)

### Secretary

Wennie Anderson 734-243-3346 [wenniel@sbcglobal.net](mailto:wenniel@sbcglobal.net)

### Board Members

Ben Anderson 734-243-3346 [anderson-ben@sbcglobal.net](mailto:anderson-ben@sbcglobal.net)  
 Joseph Pizzuto 419.902.3568 [joepizzuto@yahoo.com](mailto:joepizzuto@yahoo.com)  
 Al Henderson 419-882-1759 [blackswamp@buckeye-express.com](mailto:blackswamp@buckeye-express.com)  
 Todd Grinonneau 419-346-9551 [grinolot@yahoo.com](mailto:grinolot@yahoo.com)  
 Richard Chapplear 419-250-1583 [rchappelear@buckeye-express.com](mailto:rchappelear@buckeye-express.com)

### Membership

Al Henderson 419-882-1759 [blackswamp@buckeye-express.com](mailto:blackswamp@buckeye-express.com)

### Webmaster

Todd Grinonneau 419-346-9551 [grinolot@yahoo.com](mailto:grinolot@yahoo.com)

### Newsletter

Tajinder Singh 419-467-9636 [tajinder321@yahoo.com](mailto:tajinder321@yahoo.com)

### Clubhouse Reservations, Darkroom and Studio Group

John Dillon 419-885-2438 [jdillon356@aol.com](mailto:jdillon356@aol.com)

### Club Contest

Steve Stalker 419-472-4720 [sstalker@bex.net](mailto:ssalker@bex.net)  
 Tajinder Singh 419-467-9636 [tajinder321@yahoo.com](mailto:tajinder321@yahoo.com)